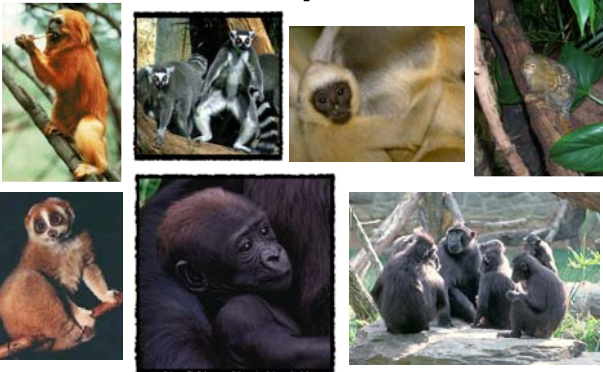


Is there such a thing as The Milk of a primate?



Primate reproduction

- Long gestations – few, large infants
- Longer lactations
- Slow growth rates
- Frequent nursing
- Low nutrient transfer per day over a long time
- Extensive investment of maternal time

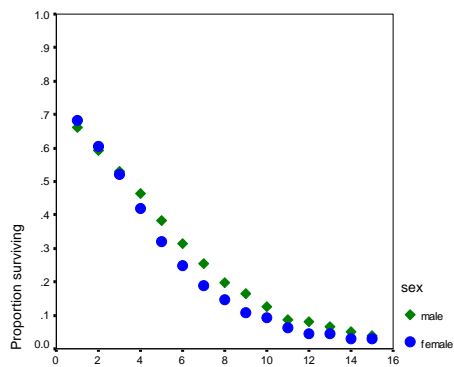
Implications for milk

- Large volumes
- Dilute milks
- High sugar – low fat
- Low protein?
- Little change over lactation?

Lactation is expensive!

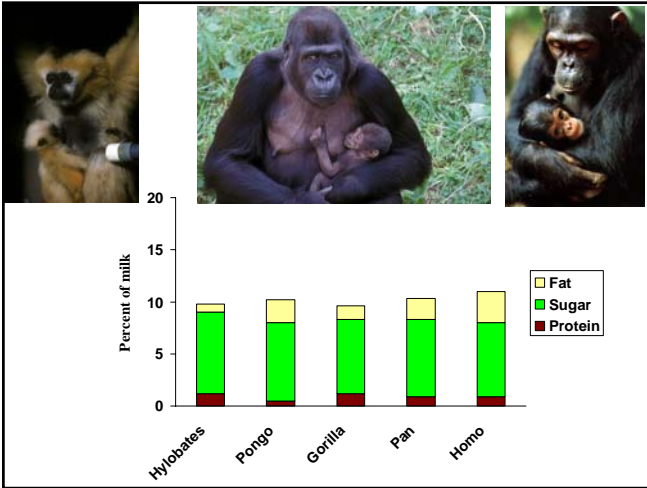


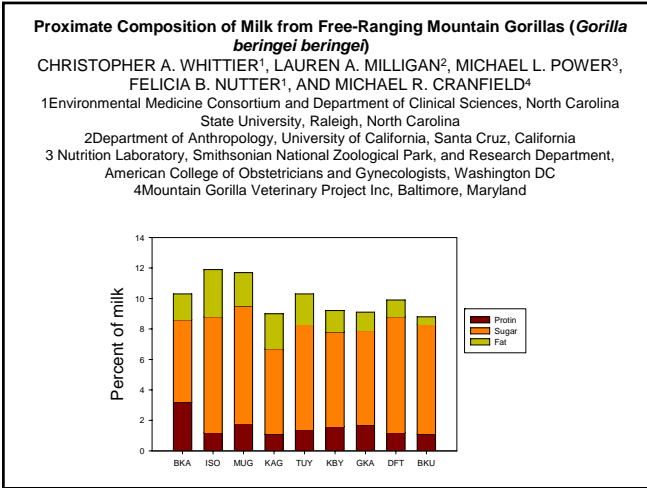
Comparison of Survival Curves for Common Marmoset Males and Females

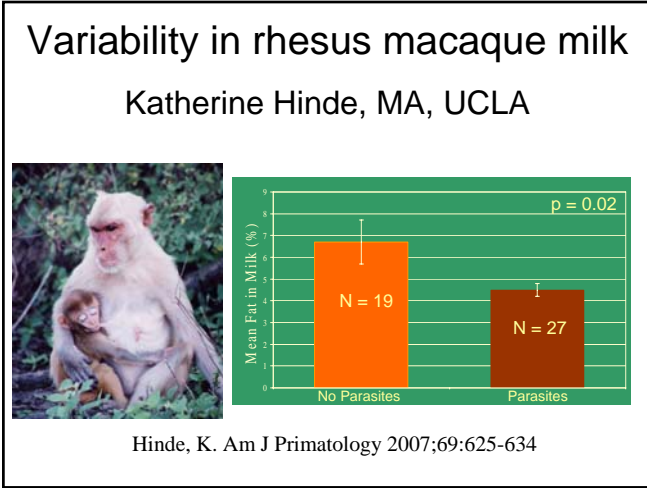




Lauren A. Milligan





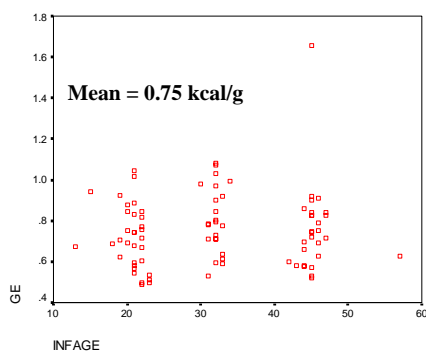


Hinde, K. Am J Primatology 2007;69:625-634

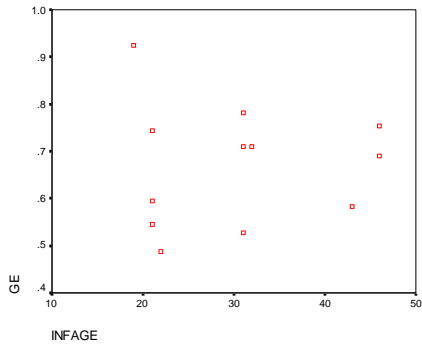
Fat content ranges from under 3% to over 15% in rhesus macaque milk

Callithrix jacchus
The common marmoset – variability in milk composition and maternal energy balance

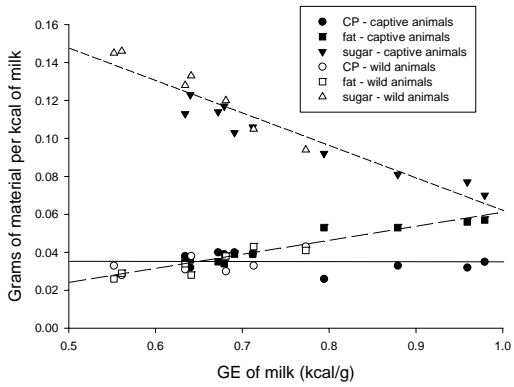




Animal 032



Grams of nutrient per kcal of milk



Saimiri milk - Milligan et al., Am J Primatol 2008;70:35-43

